



**PROSPERA  
PLACE**

## Promoters Guide

1223 Water St, Kelowna BC

250 764 6236 | [info@prosperaplace.com](mailto:info@prosperaplace.com)





# Facility

Prospera Place is an entertainment facility in the heart of Kelowna, BC. Since opening its doors in 1999 it has been the home ice of the Kelowna Rockets and has hosted acts like Tool, Cirque du Soleil, Shania Twain, Aerosmith, Dierks Bentley Monster Trucks & many more.

The arena has hosted premiere sporting events like the Memorial Cup, Skate Canada International & will host the 2025 Brier Cup.

- ✘ Multiple Concessions
- ✘ Ticket Outlet
- ✘ Restaurant
- ✘ Regular and Specialty Seats
- ✘ Luxury Suites
- ✘ Private Parking
- ✘ Nearby Multi-level Parking
- ✘ + More

## Contacts

Vice President, General Manager	Mike Strawn	<a href="mailto:mike.strawn@gslnetwork.ca">mike.strawn@gslnetwork.ca</a>
Sr Director, Venues & Operations	Marlon Weidlich	<a href="mailto:marlon.weidlich@gslnetwork.ca">marlon.weidlich@gslnetwork.ca</a>
Event Manager	Melisa Grout	<a href="mailto:melissa.grout@prosperaplace.com">melissa.grout@prosperaplace.com</a>
Catering & Merchandise	Alex Kozak	<a href="mailto:alex.kozak@eventiumfs.ca">alex.kozak@eventiumfs.ca</a>
Sr Director Marketing & Media	Krisann Hamazaki	<a href="mailto:krisann.hamazaki@gslnetwork.ca">krisann.hamazaki@gslnetwork.ca</a>
Sr Manager Of Ticketing Operations	Jenn Casorso	<a href="mailto:jenn.casorso@selectyourtickets.com">jenn.casorso@selectyourtickets.com</a>



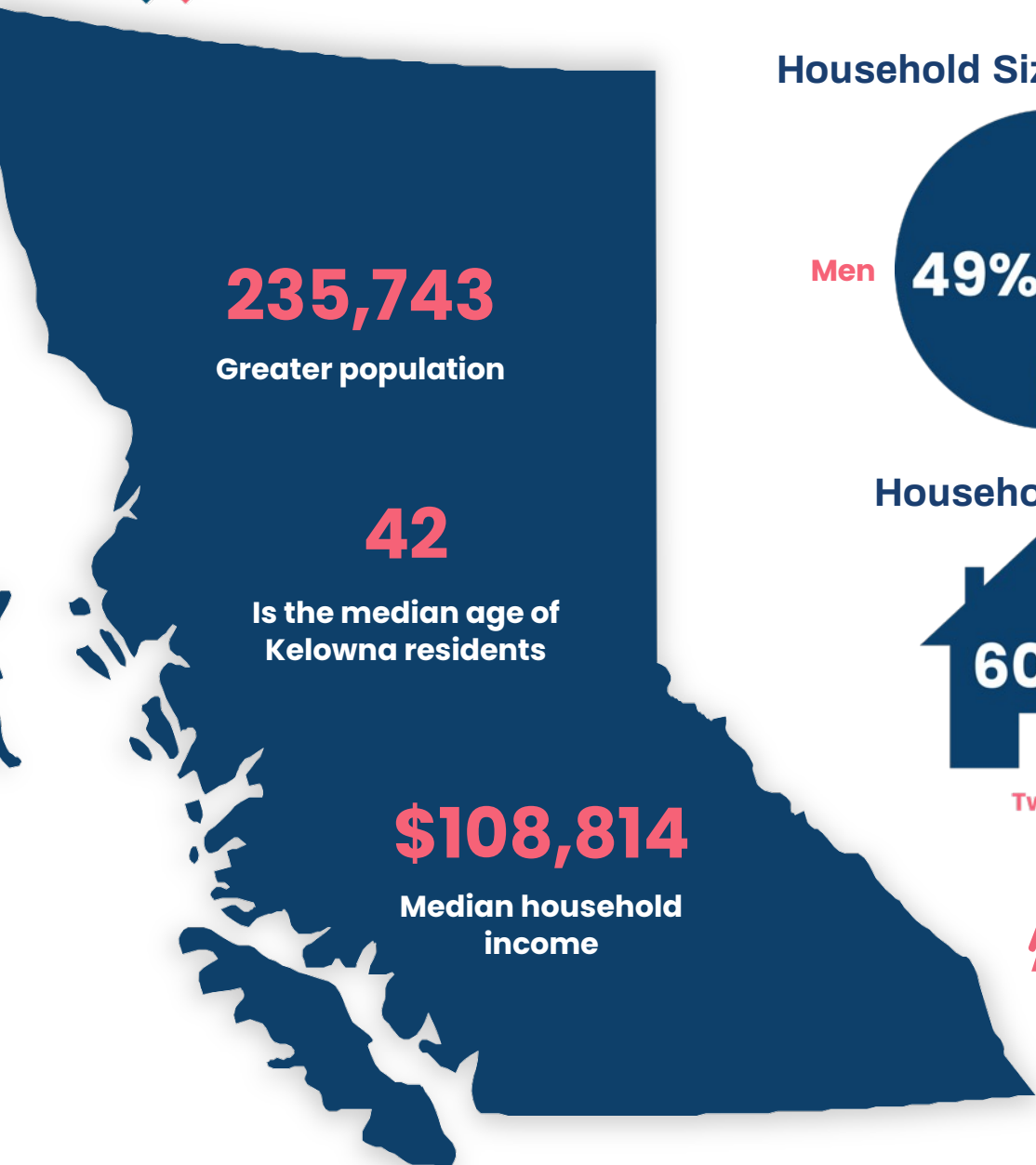
TOOL



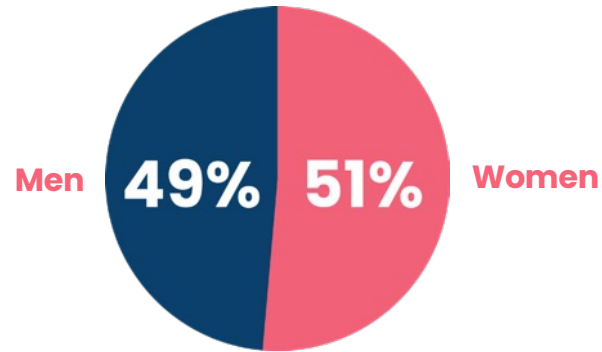
Bret Kreischer

# Kelowna is the fastest growing Metropolitan Area in Canada

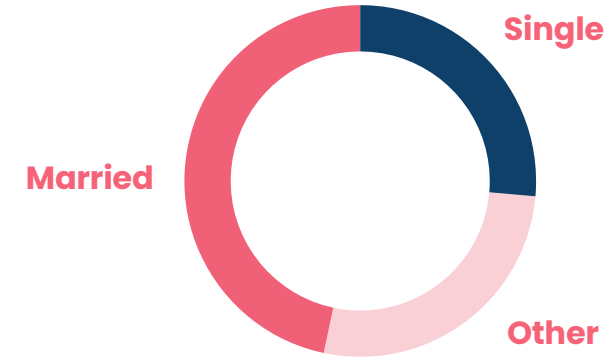
# Kelowna, BC Demographics



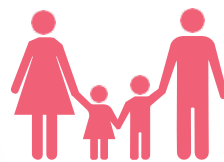
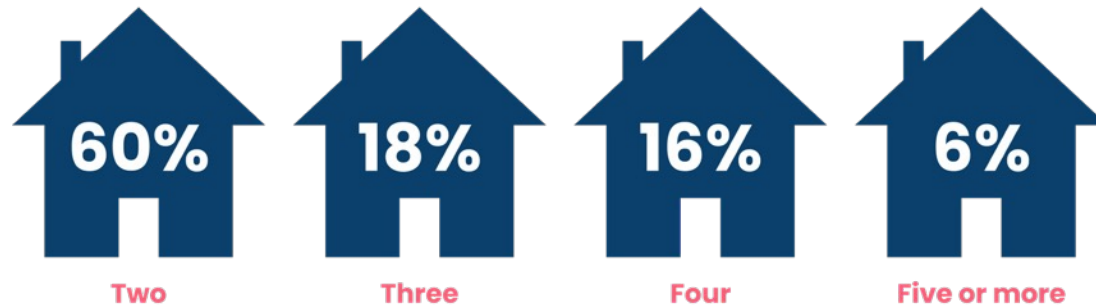
Household Size



Household Size



Household Size



**64%**  
Family households



**33%**  
Family with children



**49%**  
Couples, no children

# Box-Office

Tickets for all events at Prospera Place can be purchased through Select Your Tickets, located at Gate 1 in front of the arena.



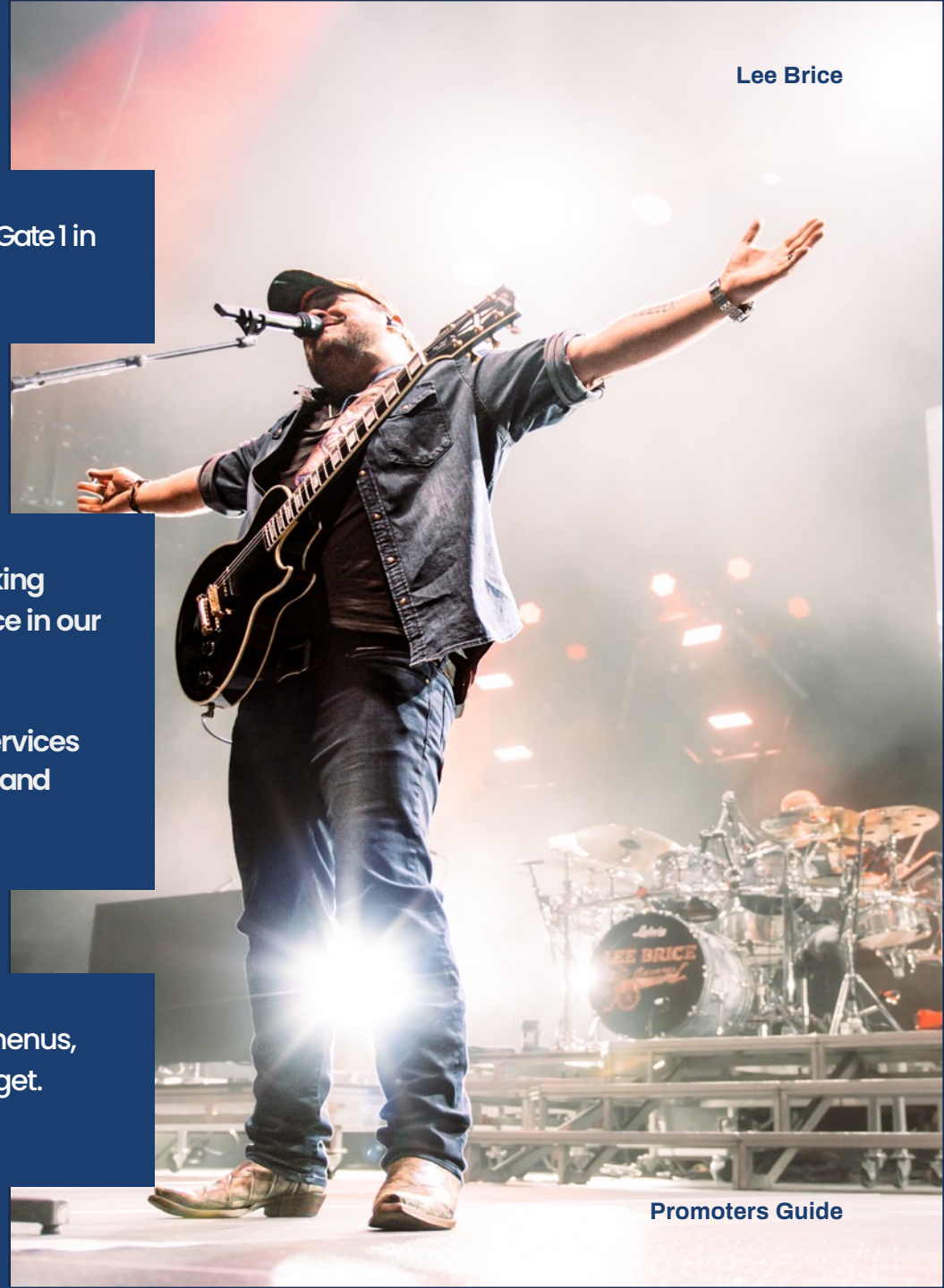
# Marketing Support

As part of GSL Group, Prospera Place has our own in-house marketing team experienced in working with event organizers and promoters to create a successful event. We have extensive experience in our local market, and we can help you deliver a successful event at our venue.

Partnering with our in-house marketing, you will have access to our wide range of marketing services including content creation, graphic design, press release distribution, website creation, print and broadcast, email, social media, digital advertising and more.

# Catering

Our catering is the key to crafting exceptional events. We enhance the ambiance, customize menus, expertly manage logistics, and accommodate dietary needs, all while staying within your budget. With our team, you benefit from our culinary expertise, presentation skills, and professionalism.



# Tech Specifications

## Show Power

- ✘ Services available: (5) 400AMP 3 phase, (2) 200AMP 3 phase

## Rooms

- ✘ Five dressing rooms
- ✘ Production room

## Production Parking

- ✘ Park in the secure area of attached parking lot
- ✘ Shore power available for four buses
- ✘ 15 trucks, 8 bus capacity on site

## Loading

- ✘ Single loading bay door located at the south end of the venue
- ✘ Door size: 21'W x 14'H to accommodate two trucks side-by-side
- ✘ No loading dock, flat level (One forklift included)
- ✘ Loading area in parking lot
- ✘ 69' push distance to change

## Rigging

- ✘ Floor to high steel: 65' (cannot rig)
- ✘ Floor to low steel 50'
- ✘ Floor to bottom of clock in high position: 36'
- ✘ 2,000 lbs capacity per point, 60,000 lbs capacity per beam, 120,000 lbs capacity total
- ✘ Spans width: 12x 24' bays
- ✘ Beam width: 12' main beams – spanners are 8"
- ✘ Rigging obstructions: sound cluster, hockey nets and clock
- ✘ Score clock is removable
- ✘ Catwalk accessible – low steel only

## Seating Capacity

- |                                 |       |
|---------------------------------|-------|
| ✘ Permanent Seating             | 5,228 |
| ✘ Standard Concert - 180 degree | 4,951 |
| ✘ Standard Concert - 240 degree | 5,386 |
| ✘ Standard Concert - 270 degree | 5,965 |
| ✘ Standard Concert - 360 degree | 6,924 |
| ✘ Theatre (half house)          | 3,306 |
| ✘ Small Theatre                 | 2,342 |
| ✘ Ice Show                      | 4,998 |

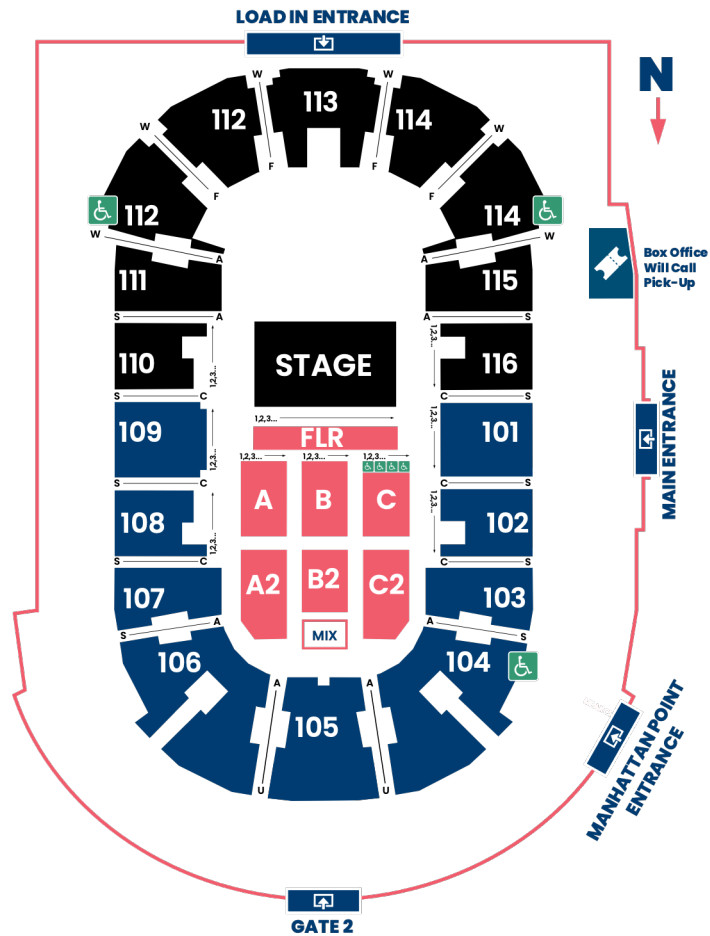


# Seating Maps

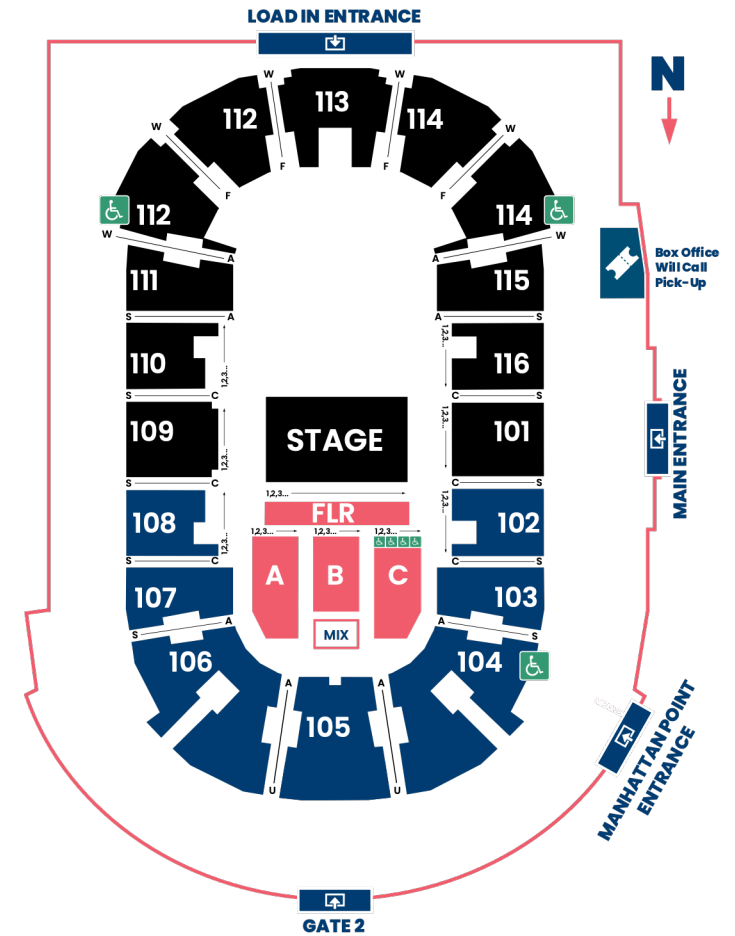


**Full Concert Setup**  
Capacity: 5,386

Bryan Adams



**Half Concert Setup**  
Capacity: 3,306

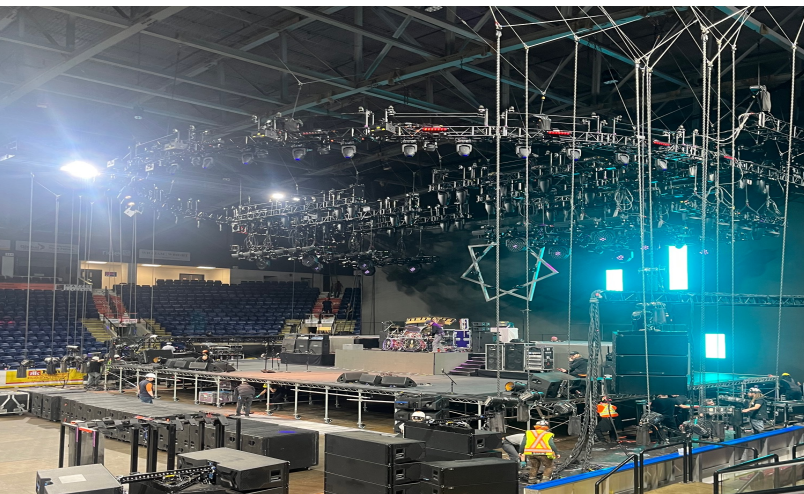
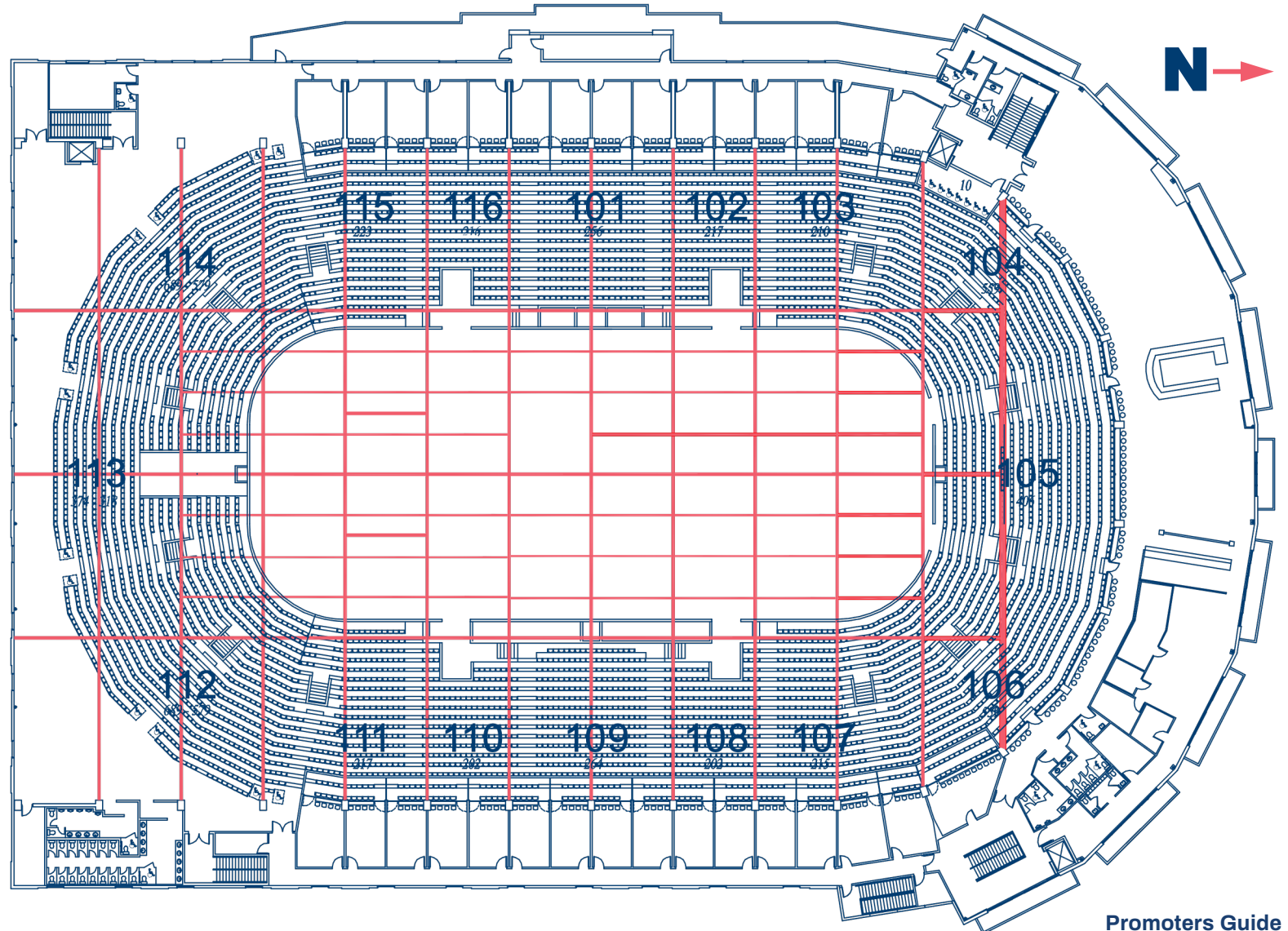


**Theatre Concert Setup**  
Capacity: 2,342

# Rigging Plot

## Rigging

- ✘ Floor to high steel: 65' (cannot rig)
- ✘ Floor to low steel 50'
- ✘ Floor to bottom of clock in high position: 36'
- ✘ 2,000 lbs capacity per point, 60,000 lbs capacity per beam, 120,000 lbs capacity total
- ✘ Spans width: 12x 24' bays
- ✘ Beam width: 12' main beams - spanners are 8"
- ✘ Rigging obstructions: sound cluster, hockey nets and clock
- ✘ Score clock is removable
- ✘ Catwalk accessible – low steel only







# Venue Rates

## Full Concert Setup

Over 4,000 patrons

Rental Rate	Call
House Nut	Call

### Included in House Nut

Facility Conversion, stage rental & set up (includes hand rails & stairs), barricade (up to 80ft), chair set on floor, 4 sets of shore power (60 & 30 amp plug-ins available), show power (400 & 200 amps, max 2400), 4 standard dressing room set-ups, hard wired or wireless internet, 1 forklift, use of production lot, typical building security, ushers, ticket scanners & medical staff, 4 spotlights & towels

### Taxes, Facility Fees & Credit Cards

Tax	5%
Facility Fee	\$2.00
CC at Box Office	3% credit card fees passed to consumer at all points of purchase

## Half Concert Setup

Over 2,000 patrons

Rental Rate	Call
House Nut	Call

### Included in House Nut

Facility Conversion, stage rental & set up (includes hand rails & stairs), barricade (up to 80ft), chair set on floor, 4 sets of shore power (60 & 30 amp plug-ins available), show power (400 & 200 amps, max 2400), 4 standard dressing room set-ups, hard wired or wireless internet, 1 forklift, use of production lot, typical building security, ushers, ticket scanners & medical staff, 4 spotlights & towels

### Taxes, Facility Fees & Credit Cards

Tax	5%
Facility Fee	\$2.00
CC at Box Office	3% credit card fees passed to consumer at all points of purchase

## Theatre Concert Setup

Under 3,000 patrons

Rental Rate	Call
House Nut	Call

### Included in House Nut

Facility Conversion, stage rental & set up (includes hand rails & stairs), barricade (up to 80ft), chair set on floor, 4 sets of shore power (60 & 30 amp plug-ins available), show power (400 & 200 amps, max 2400), 4 standard dressing room set-ups, hard wired or wireless internet, 1 forklift, use of production lot, typical building security, ushers, ticket scanners & medical staff, 4 spotlights & towels

### Taxes, Facility Fees & Credit Cards

Tax	5%
Facility Fee	\$2.00
CC at Box Office	3% credit card fees passed to consumer at all points of purchase

## Not Included in House Nut

Electrician, catering, production (including stage-hands, rigging, etc.), all permits as necessary, policing (if required), ambulance (if required)

\*Artist to obtain Canada Revenue Agency Tax Waiver in advance of show date. Failure to produce the Tax Waiver will result in the 15% withholding tax being applied to artist payment.

# Prospera Place - Venue Parking

