



**PROSPERA
PLACE**

Promoters Guide

1223 Water St, Kelowna BC
250 764 6236 | info@prosperaplace.com



Facility

Prospera Place is an entertainment facility in the heart of Kelowna, BC. Since opening its doors in 1999 it has been the home ice of the Kelowna Rockets and has hosted acts like Tool, Cirque du Soleil, Shania Twain, Aerosmith, Dierks Bentley Monster Trucks & many more.

The arena has hosted premiere sporting events like the Memorial Cup, Skate Canada International & will host the 2025 Brier Cup.

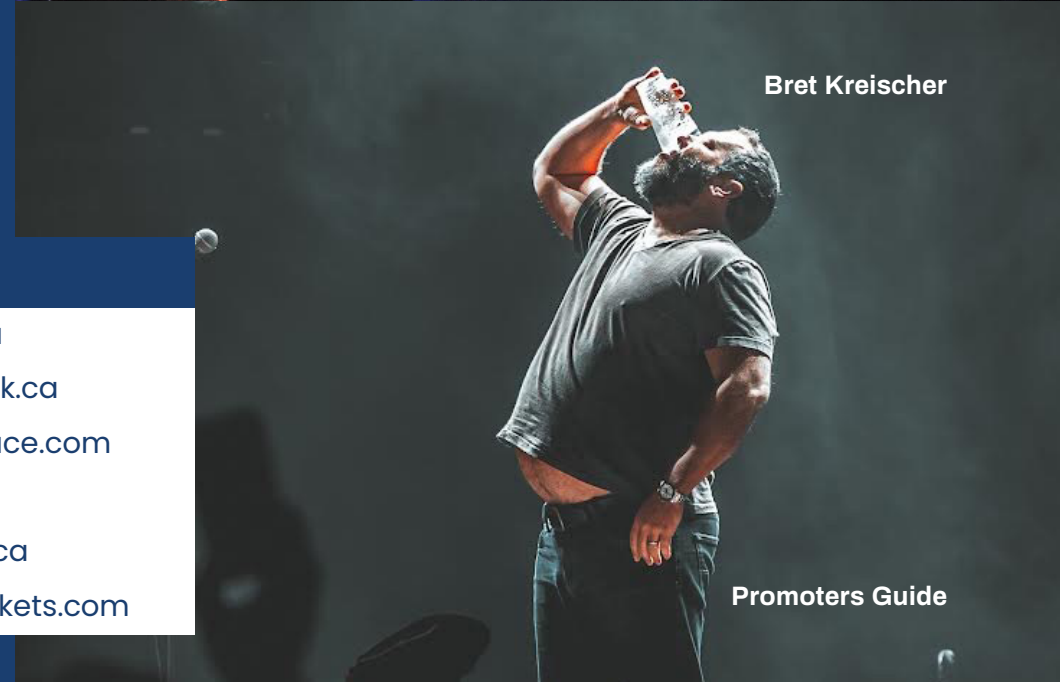
- ✘ Multiple Concessions
- ✘ Ticket Outlet
- ✘ Restaurant
- ✘ Regular and Specialty Seats
- ✘ Luxury Suites
- ✘ Private Parking
- ✘ Nearby Multi-level Parking
- ✘ + More

Contacts

Vice President, General Manager	Mike Strawn	mike.strawn@gslnetwork.ca
Sr Director, Venues & Operations	Marlon Weidlich	marlon.weidlich@gslnetwork.ca
Event Manager	Melisa Grout	melissa.grout@prosperaplace.com
Catering & Merchandise	Alex Kozak	alex.kozak@eventiumfs.ca
Director Marketing & Creative	Dustin Pakosh	dustin.pakosh@gslnetwork.ca
Sr Manager Of Ticketing Operations	Jenn Casorso	jenn.casorso@selectyourtickets.com



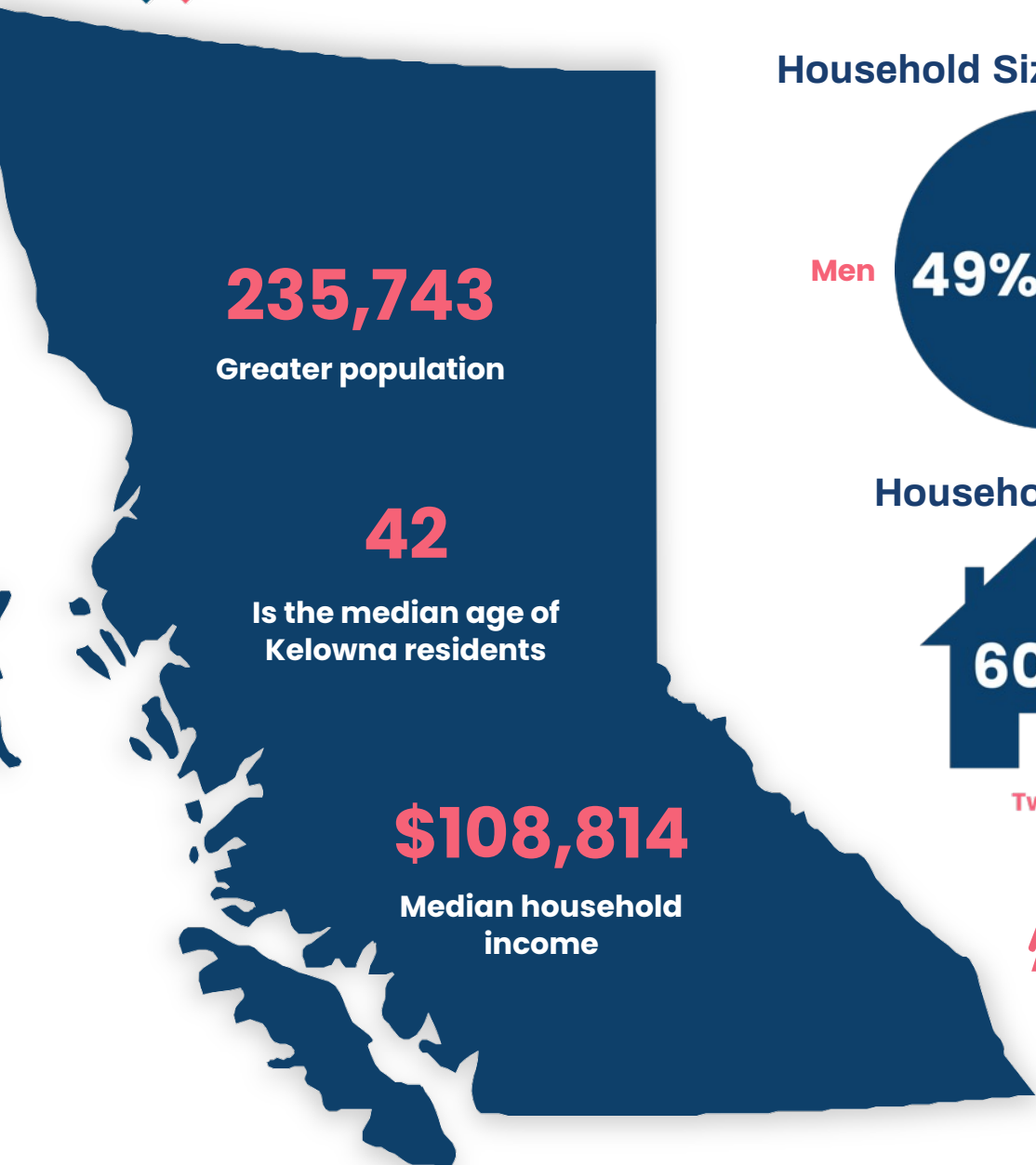
TOOL



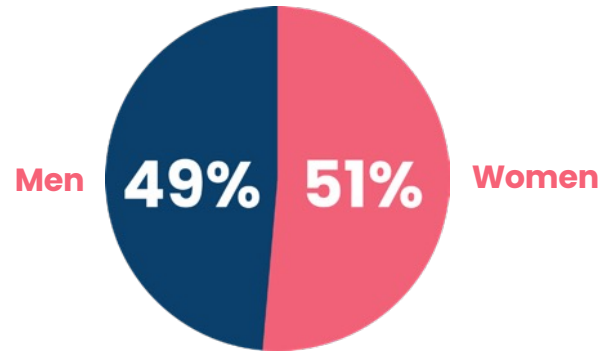
Bret Kreischer

Kelowna is the fastest growing Metropolitan Area in Canada

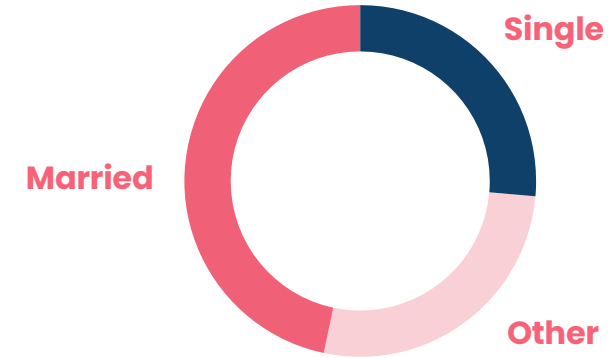
Kelowna, BC Demographics



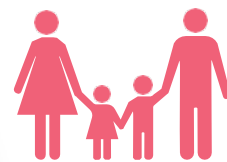
Household Size



Household Size



Household Size



64%
Family households



33%
Family with children



49%
Couples, no children

Box-Office

Tickets for all events at Prospera Place can be purchased through Select Your Tickets, located at Gate 1 in front of the arena.



Marketing Support

As part of GSL Group, Prospera Place has our own in-house marketing team experienced in working with event organizers and promoters to create a successful event. We have extensive experience in our local market, and we can help you deliver a successful event at our venue.

Partnering with our in-house marketing, you will have access to our wide range of marketing services including content creation, graphic design, press release distribution, website creation, print and broadcast, email, social media, digital advertising and more.

Catering

Our catering is the key to crafting exceptional events. We enhance the ambiance, customize menus, expertly manage logistics, and accommodate dietary needs, all while staying within your budget. With our team, you benefit from our culinary expertise, presentation skills, and professionalism.



Tech Specifications

Show Power

- ✘ Services available: (5) 400AMP 3 phase, (2) 200AMP 3 phase

Rooms

- ✘ Five dressing rooms
- ✘ Production room

Production Parking

- ✘ Park in the secure area of attached parking lot
- ✘ Shore power available for four buses
- ✘ 15 trucks, 8 bus capacity on site

Loading

- ✘ Single loading bay door located at the south end of the venue
- ✘ Door size: 21'W x 14'H to accommodate two trucks side-by-side
- ✘ No loading dock, flat level (One forklift included)
- ✘ Loading area in parking lot
- ✘ 69' push distance to change

Rigging

- ✘ Floor to high steel: 65' (cannot rig)
- ✘ Floor to low steel 50'
- ✘ Floor to bottom of clock in high position: 36'
- ✘ 2,000 lbs capacity per point, 60,000 lbs capacity per beam, 120,000 lbs capacity total
- ✘ Spans width: 12x 24' bays
- ✘ Beam width: 12' main beams – spanners are 8"
- ✘ Rigging obstructions: sound cluster, hockey nets and clock
- ✘ Score clock is removable
- ✘ Catwalk accessible – low steel only

Seating Capacity

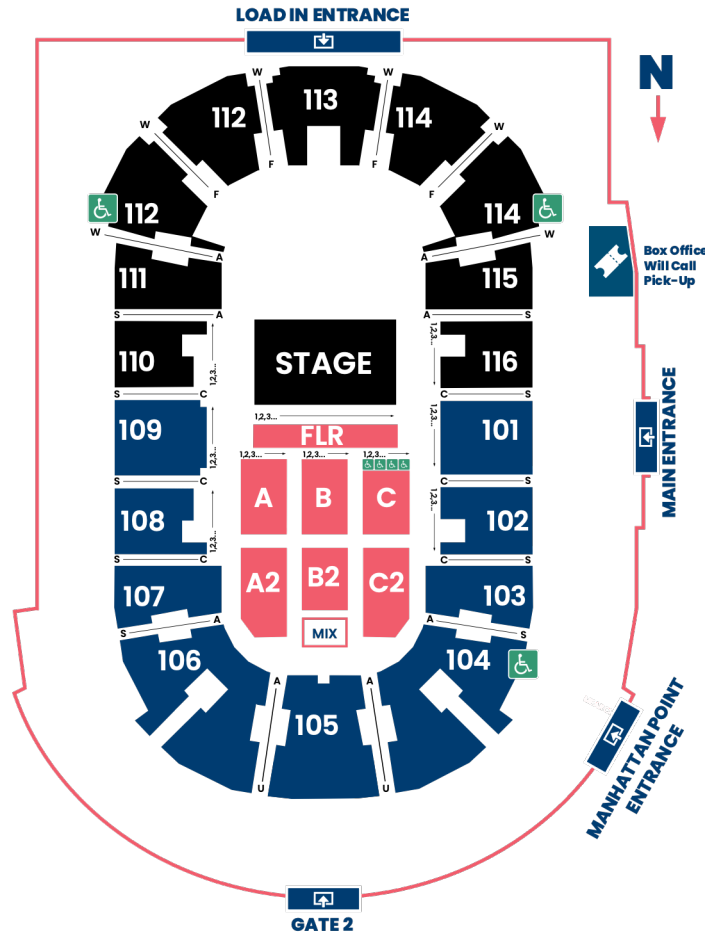
- | | |
|---------------------------------|-------|
| ✘ Permanent Seating | 5,228 |
| ✘ Standard Concert - 180 degree | 4,951 |
| ✘ Standard Concert - 240 degree | 5,386 |
| ✘ Standard Concert - 270 degree | 5,965 |
| ✘ Standard Concert - 360 degree | 6,924 |
| ✘ Theatre (half house) | 3,306 |
| ✘ Small Theatre | 2,342 |
| ✘ Ice Show | 4,998 |



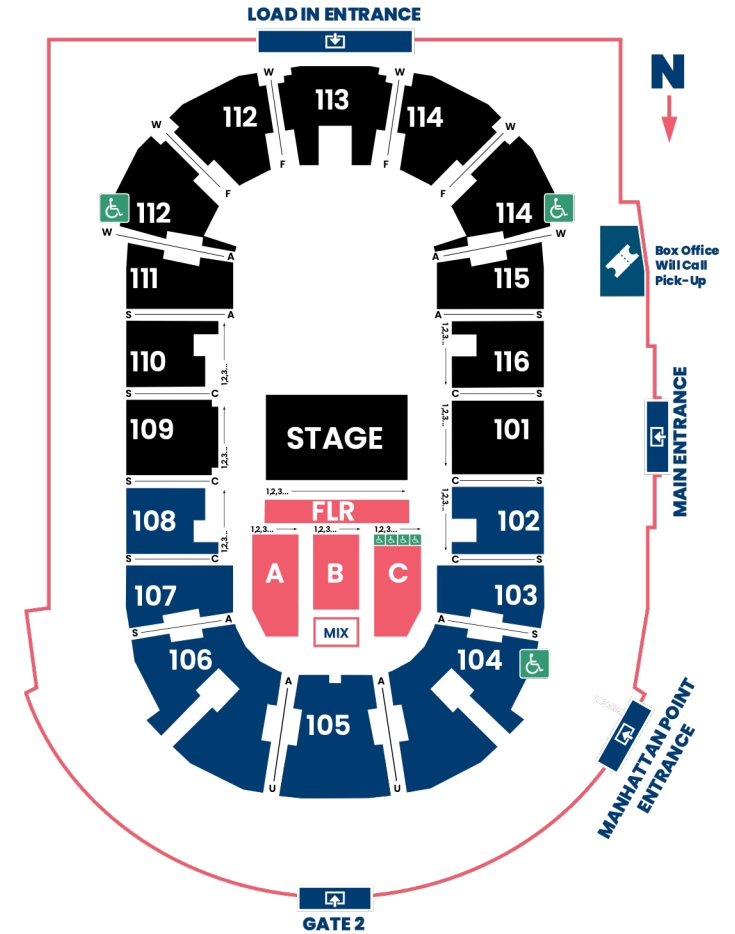
Seating Maps



Full Concert Setup
Capacity: 7,835



Half Concert Setup
Capacity: 3,306

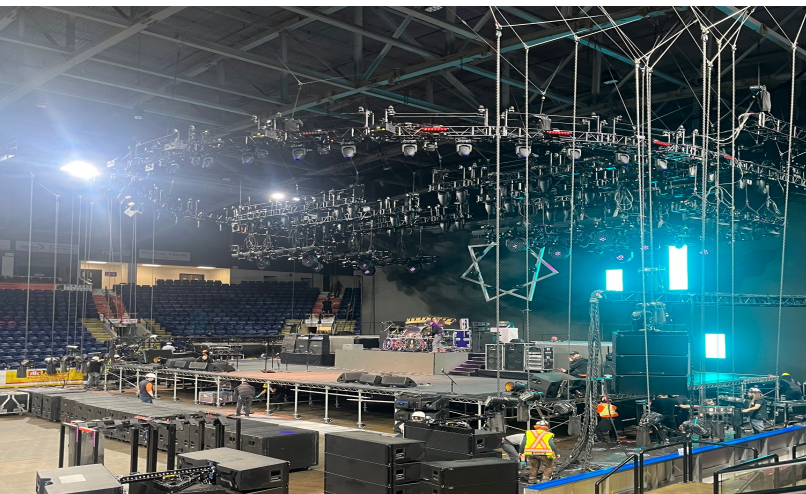
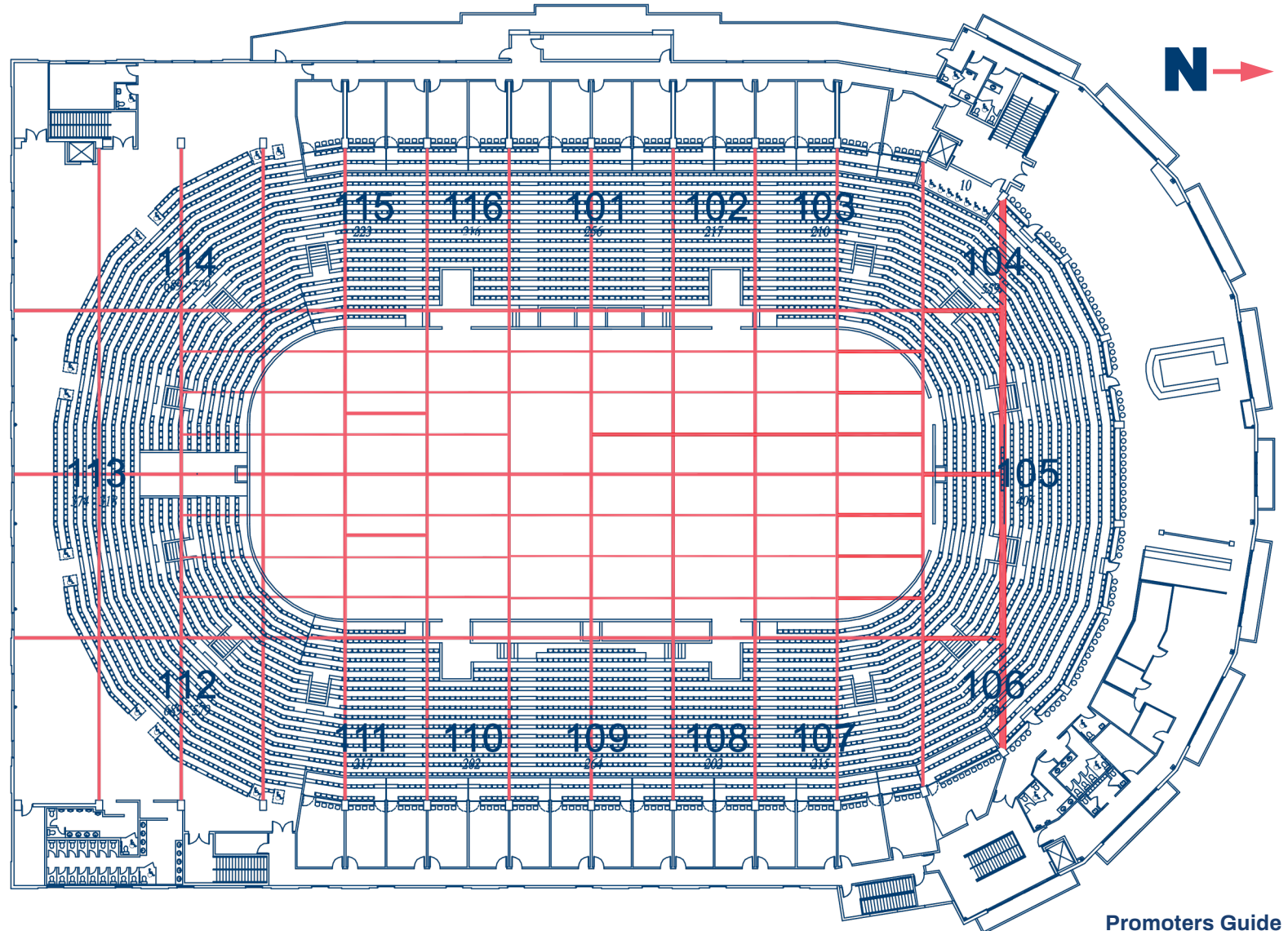


Theatre Concert Setup
Capacity: 2,342

Rigging Plot

Rigging

- ✘ Floor to high steel: 65' (cannot rig)
- ✘ Floor to low steel 50'
- ✘ Floor to bottom of clock in high position: 36'
- ✘ 2,000 lbs capacity per point, 60,000 lbs capacity per beam, 120,000 lbs capacity total
- ✘ Spans width: 12x 24' bays
- ✘ Beam width: 12' main beams - spanners are 8"
- ✘ Rigging obstructions: sound cluster, hockey nets and clock
- ✘ Score clock is removable
- ✘ Catwalk accessible - low steel only





Venue Rates

Full Concert Setup

Over 4,000 patrons

Rental Rate	Call
House Nut	Call

Included in House Nut

Facility Conversion, stage rental & set up (includes hand rails & stairs), barricade (up to 80ft), chair set on floor, 4 sets of shore power (60 & 30 amp plug-ins available), show power (400 & 200 amps, max 2400), 4 standard dressing room set-ups, hard wired or wireless internet, 1 forklift, use of production lot, typical building security, ushers, ticket scanners & medical staff, 4 spotlights & towels

Taxes, Facility Fees & Credit Cards

Tax	5%
Facility Fee	\$2.00
CC at Box Office	3% credit card fees passed to consumer at all points of purchase

Half Concert Setup

Over 2,000 patrons

Rental Rate	Call
House Nut	Call

Included in House Nut

Facility Conversion, stage rental & set up (includes hand rails & stairs), barricade (up to 80ft), chair set on floor, 4 sets of shore power (60 & 30 amp plug-ins available), show power (400 & 200 amps, max 2400), 4 standard dressing room set-ups, hard wired or wireless internet, 1 forklift, use of production lot, typical building security, ushers, ticket scanners & medical staff, 4 spotlights & towels

Taxes, Facility Fees & Credit Cards

Tax	5%
Facility Fee	\$2.00
CC at Box Office	3% credit card fees passed to consumer at all points of purchase

Theatre Concert Setup

Under 3,000 patrons

Rental Rate	Call
House Nut	Call

Included in House Nut

Facility Conversion, stage rental & set up (includes hand rails & stairs), barricade (up to 80ft), chair set on floor, 4 sets of shore power (60 & 30 amp plug-ins available), show power (400 & 200 amps, max 2400), 4 standard dressing room set-ups, hard wired or wireless internet, 1 forklift, use of production lot, typical building security, ushers, ticket scanners & medical staff, 4 spotlights & towels

Taxes, Facility Fees & Credit Cards

Tax	5%
Facility Fee	\$2.00
CC at Box Office	3% credit card fees passed to consumer at all points of purchase

Not Included in House Nut

Electrician, catering, production (including stage-hands, rigging, etc.), all permits as necessary, policing (if required), ambulance (if required)

*Artist to obtain Canada Revenue Agency Tax Waiver in advance of show date. Failure to produce the Tax Waiver will result in the 15% withholding tax being applied to artist payment.

Prospera Place - Venue Parking

